

DECOMPRESSION UNITS

INDUSTRIAL GASES



SQS | DECOMPRESSION UNIT WITH CHANGE OVER

The SQS semi-automatic unit prevents downtime by automatically switching gas supply from the primary cylinder bank to the reserve cylinder bank. The user resets the primary bank by turning the lever. Manual adjustment of the individual regulators is not required.

APPLICATIONS:

- Technical applications;
- Automation;
- Industrial process;
- Welding and laser cutting machines;
- Heating and burning systems.

FEATURES:

- Spring loaded diaphragm;
- Raccomanded for non-corrosive gases;
- suitable for oxygen use;

MATERIALS

Pressure regulators	Ottone / Brass
High pressure valve	Ottone / Brass
Pipes	Rame 10X8 / Copper 10x8
Diaphragm	Viton (range 10-8 bar)
Piston	Ottone / Brass (range 28-30 bar)

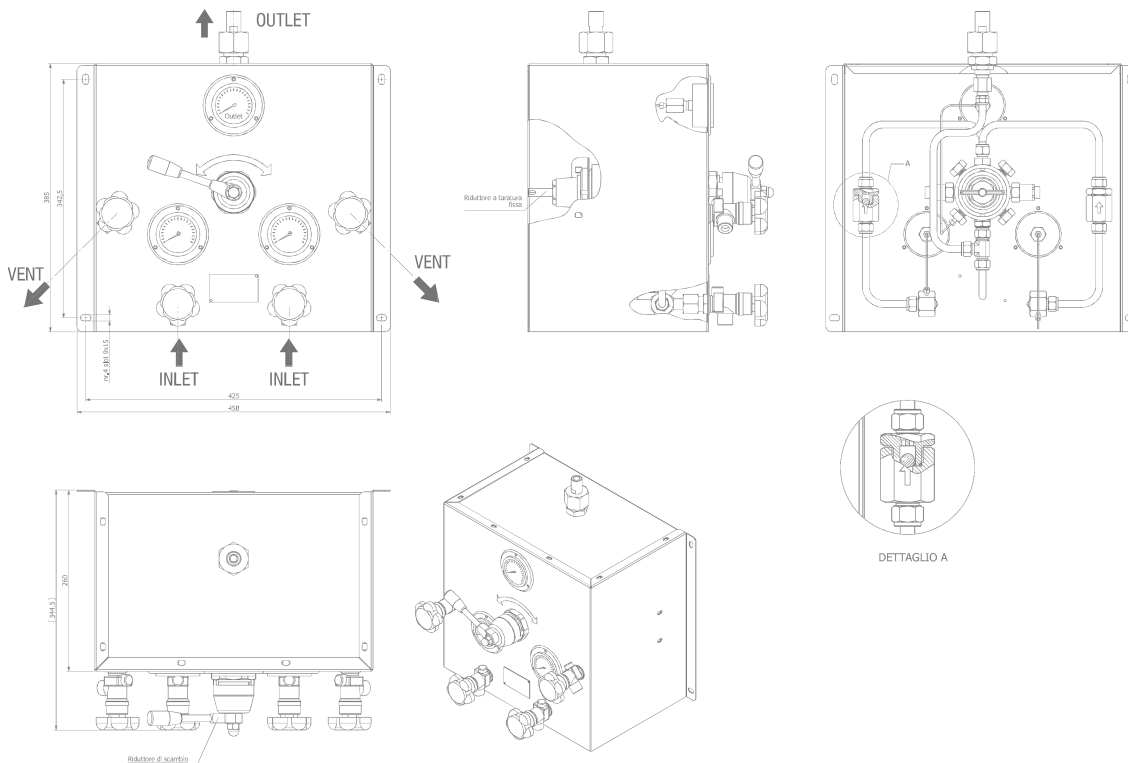
COMPONENTS

- Nr 2 shut-off valves with non- return valves on inlets
- Nr 2 pressure regulators
- Nr 2 high pressure gauges for detecting the supply pressure
- Nr 1 pressure gauge for detecting the output pressure
- Nr 2 purge valves
- Nr 1 lever to prioritize the supply line
- Nr 1 retaining frame of stainless steel
- All components are degreased for using Oxygen**

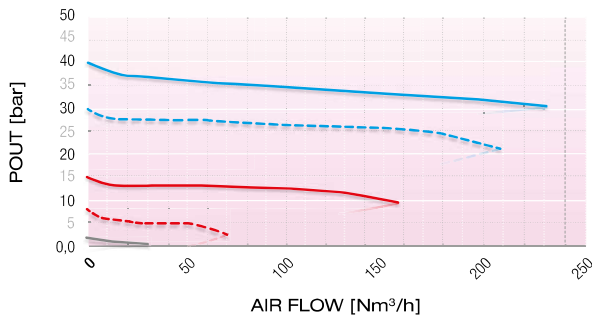
TECHNICAL DATA

P. max Inlet	220 Bar
Range pressure out	10-8 / 32-28 Bar
Flow rate	150 m3/h to 10 bar
Weight	20 kg / 44 lb
Working temp.	-20°C to +80°C
Conformity to Directives	PED 97/23 CE

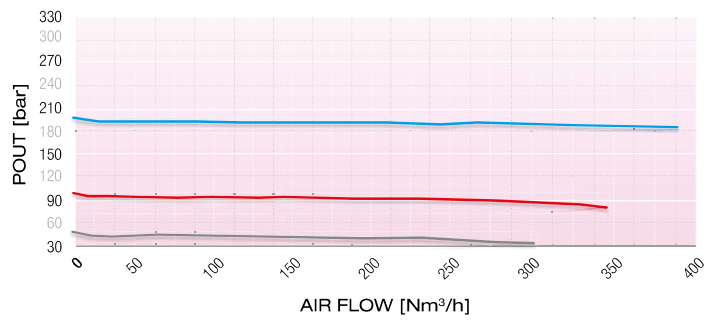
DECOMPRESSION UNITS



FLOW RATE



FLOW RATE



Code	Gas	Conn. Inlet	Conn. Outlet	Press. In	Press. Out	Inlet Gauge	Outlet Gauge	Flow	Dim. (LxPxH)
SQS00015	O ₂ -N ₂ -Ar-e-Aria-CO ₂	2-UNI 11144	1/2" GM	220 bar	10÷8 bar	0÷400 bar	0÷25 bar	100 Nm ³ /H	450x350x450
SQS00017	H ₂ - CH ₄	1H-UNI 11144	G 1/2" GM	220 bar	10÷8 bar	0÷400 bar	0÷25 bar	100 Nm ³ /H	450x350x450
SQS00050	O ₂ -N ₂ -Ar-e-Aria-CO ₂	2-UNI 11144	1/2" GM	220 bar	32÷28 bar	0÷400 bar	0÷100 bar	210 Nm ³ /H	450x350x450
SQS00051	H ₂ - CH ₄	2-UNI 11144	1/2" GM	220 bar	32÷28 bar	0÷400 bar	0÷100 bar	210 Nm ³ /H	450x350x450

The outgoing calibration pressure can be customized when ordering

NOTE